

Approved
6-2025

BULLETIN



2023-0000010 OM
Operation manual

Quantity of sheets

Sheet

GROUND: customers' requirement

Bulletin 6-2025	TRACTOR MODELS	2023
---------------------------	----------------	-------------

Annotation

This operation bulletin clarifies information on carrying out the procedure of maintenance service of FDA wheel gear group and clarifies the diagram in the section of the front driving axle (the location of the driven gear has been changed).

Content of changes

Section 6 Maintenance service, clause 6.4.3.5 Operation 28. Checking oil level in the main gear housing and wheel gear group housings of FDA shall be amended as follows.

6.4.3.5 Operation 28. Checking oil level in the main gear housing and wheel gear group housings of FDA

To check oil level in the main gear housing and wheel gear group housings of FDA perform the following actions:

- place the tractor on a flat horizontal platform so that the arrow "A" (figure 6.4.28), casted on the FDA housing, has a horizontal position, and threaded rivet nuts B are located on the top;
- engage the parking brake and lock the wheels from moving in front and behind with chocks preventing spontaneous movement of the tractor. The engine must be stopped;
- unscrew plugs 2 in wheel gear group housings 1 and check\fill plug in main gear housing 3;
- oil level in the wheel gear group housings 1 and main gear housing 3 shall reach the lower edges of the threaded holes of plugs 2 and 5 correspondingly;
- if necessary, add oil to the lower edges of the holes of plugs 2 and 5;
- mount plugs 2 and 5 back.

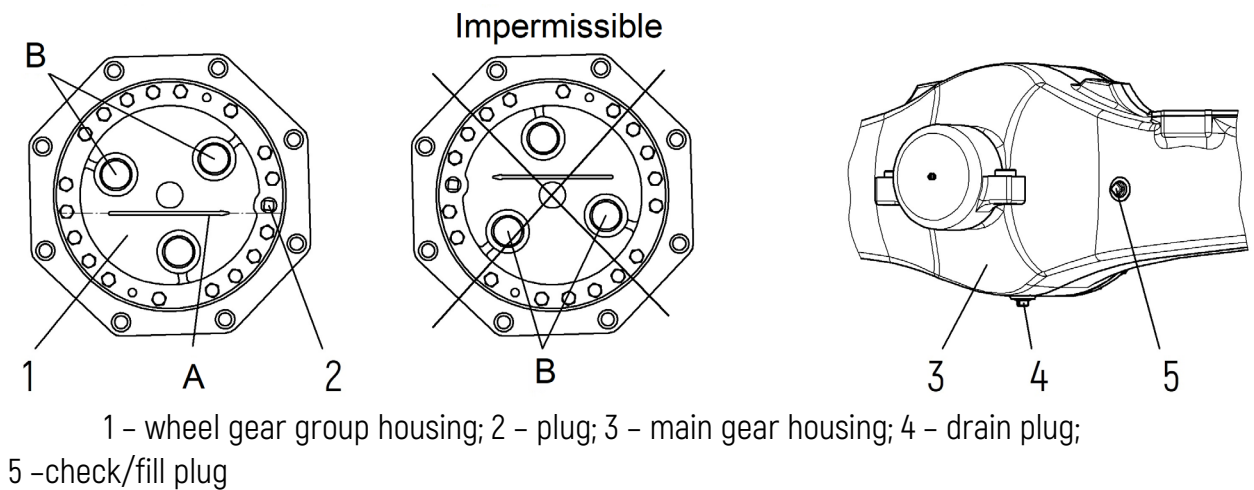


Figure 6.4.28 – Oil level check in the FDA gear housings

WARNING: BE CAREFUL TO AVOID CONTACT WITH HOT OIL AND HOT SURFACES OF THE FDA HOUSINGS!

Clause 6.4.5.5 Operation 56. Changing oil in the main gear housing and in wheel gear group housings of FDA, shall be amended as follows.

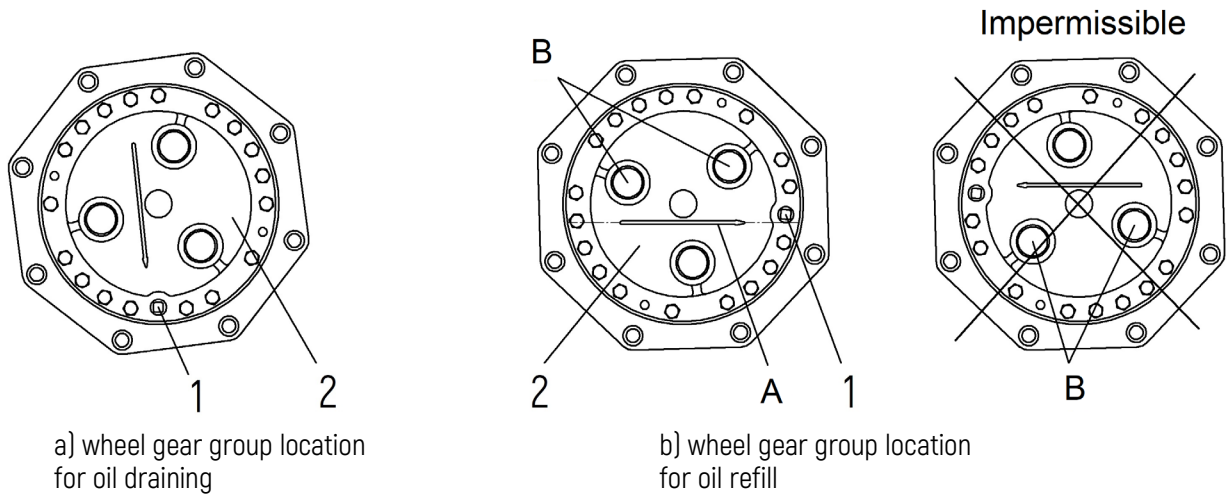
6.4.5.5 Operation 56. Changing oil in the main gear housing and in wheel gear group housings of FDA

Before changing oil it is necessary to warm it in the FDA wheel gear group housings up to operating temperature by driving the tractor from 5 to 15 minutes, depending on the ambient temperature.

To change oil in the housings perform the following:

- place the tractor on a flat horizontal platform, with plug 1 (figure 6.4.50 a) in the lowest position;
- engage the parking brake and lock the wheels from moving in front and behind with chocks, which exclude spontaneous movement of the tractor. The engine must be turned off;
- unscrew check/fill plug 5 (figure 6.4.28) and drain plug 4 of main gear housing 3, drain oil from the main gear housing;
- unscrew plug 1 of wheel gear group housing 2, drain oil from wheel gear group housing 2 (figure 6.4.50 a);
- by turning the wheel, set FDA so that arrow A, casted on the housing of the wheel gear group, has a horizontal position, and threaded rivet nuts B are located on the top (figure 6.4.50 b);
- pour fresh oil through the hole of plug 1 up the lower edge of the plug hole;
- screw drain plug 4 in main gear housing 3 and through the hole of check/fill plug 5 pour fresh oil up to the lower edge of check/fill plug 5 (figure 6.4.28);
- screw plug 1 (figure 6.4.50 b) and plug 5 (figure 6.4.28).

Perform same actions on the second FDA wheel gear group.

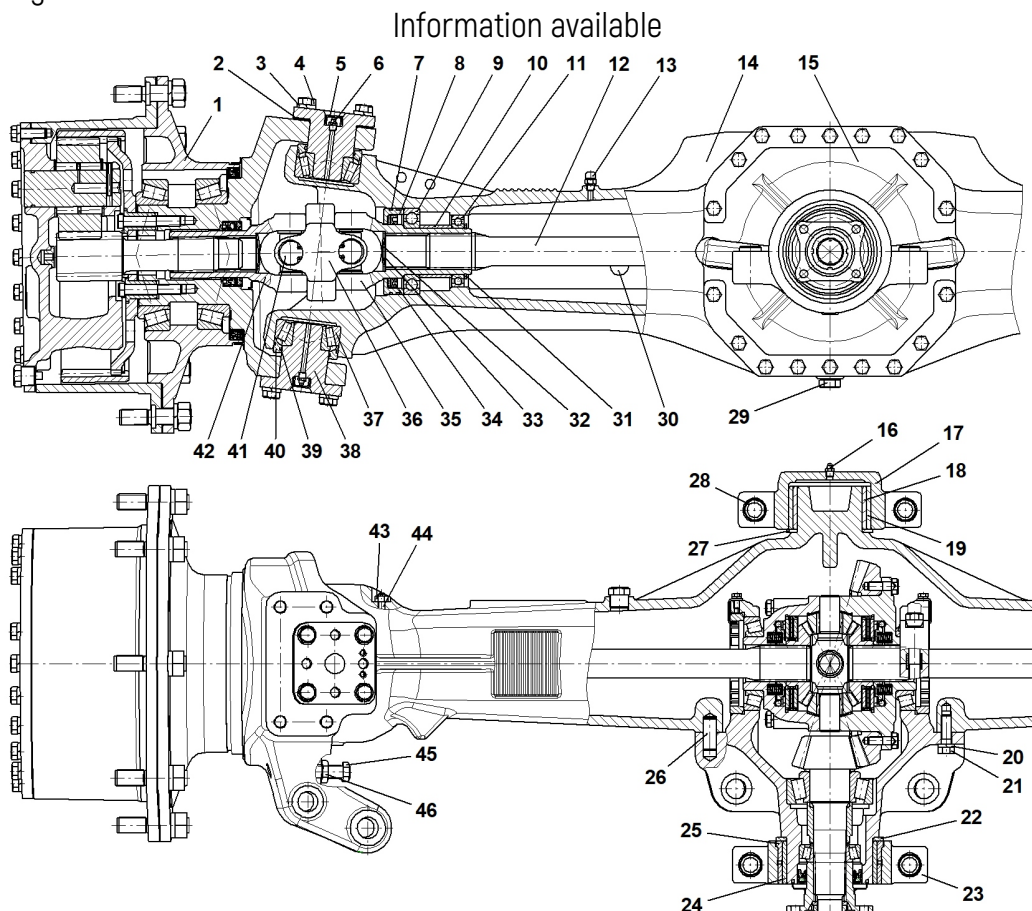


1 – plug; 2 – wheel gear group housing

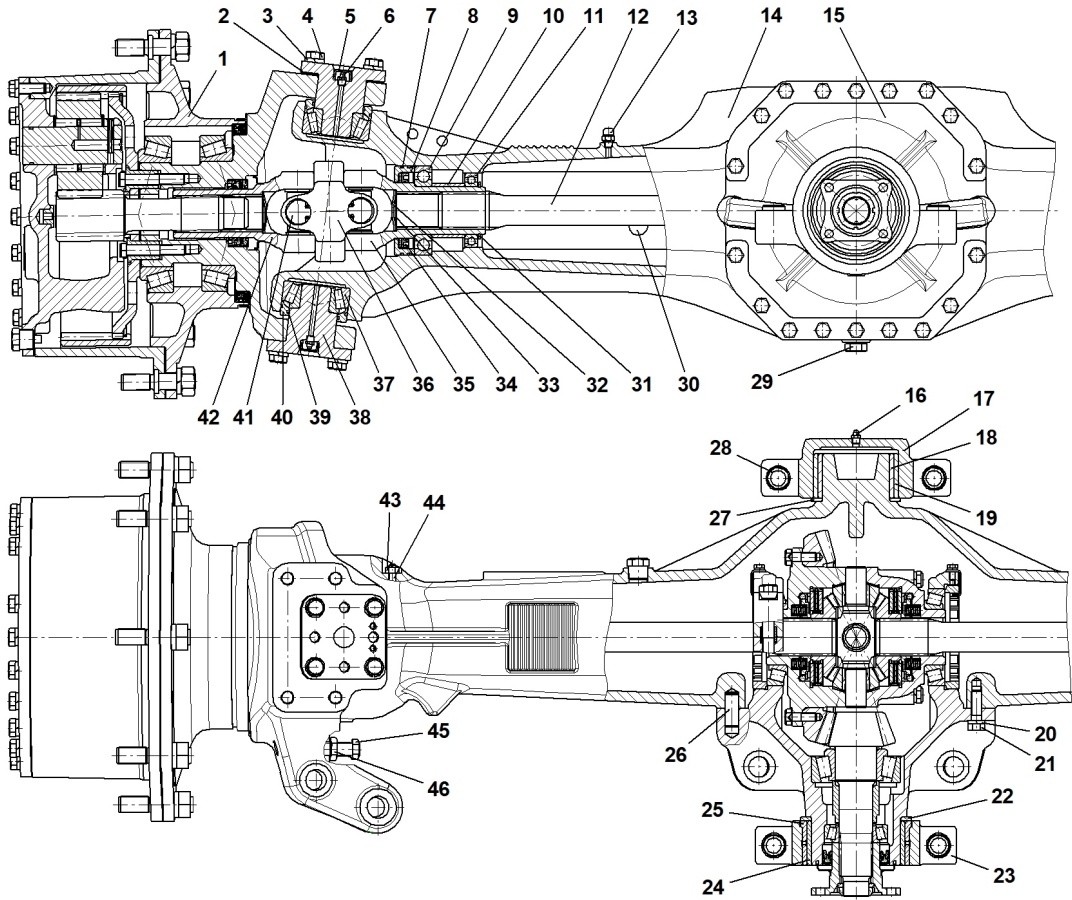
Figure 6.4.50 – Oil change in the FDA wheel gear group housings

WARNING: BE CAREFUL TO AVOID CONTACT WITH HOT OIL AND HOT SURFACES OF FDA HOUSINGS!

Paragraph 4.5 Front driving axle, clause 4.5.1 General information on FDA structure. Replace figure 4.5.1.

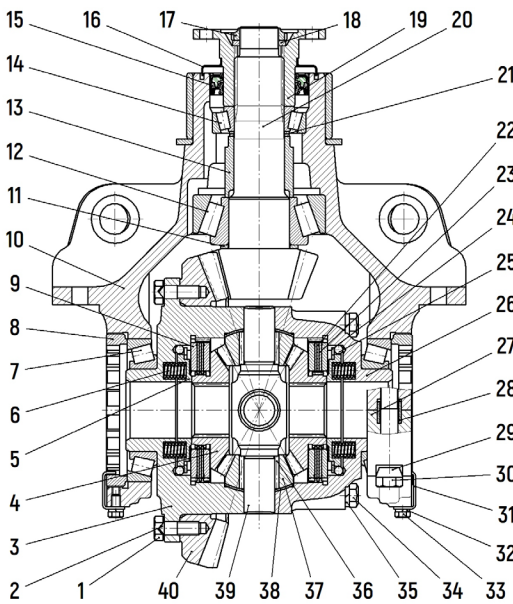


Shall be replaced with

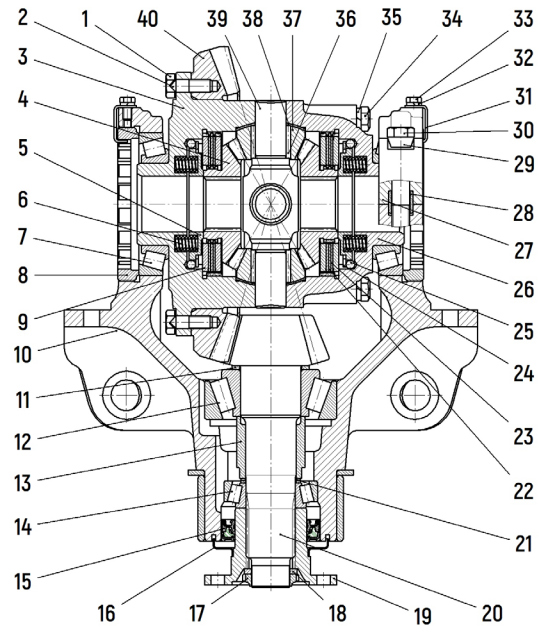


Clause 4.5.2 Central reduction gear unit. Replace figure 4.5.2

Information available

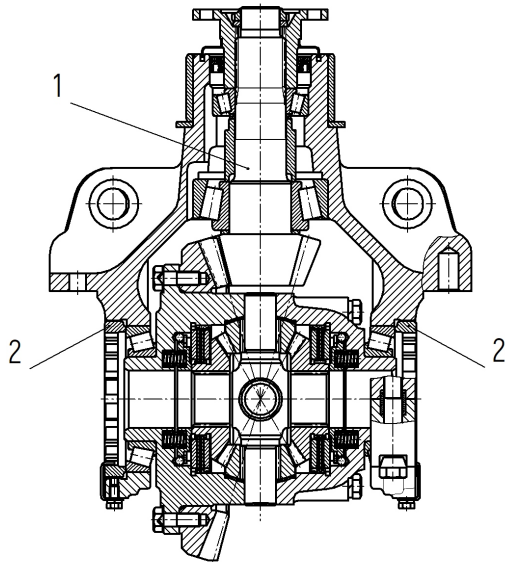


Shall be replaced with



Clause 4.5.5 Check and adjustment of preload in taper bearings of the differential.
Replace figure 4.5.5

Information available



Shall be replaced with

